

Staff

Foyer is run by a program director who oversees operations and administrates rent collection. Case managers help residents create an independent living plan that promotes self-sufficiency and goal attainment. Resident assistants are on-site 24 hours a day to ensure safety, security, and to help residents attain their goals.

How to Apply

Referrals can be initiated personally or by an agency. Forms for agency referrals can be obtained by calling 651-251-3502 or online at www.thesalarmy.org/foyer.

An orientation session is held monthly. Interested parties can tour Foyer and learn about program requirements. Applications and staff interviews are also available.

To sign up for an orientation, call 651-251-3502.



DOING
THE MOST
GOODSM



MISSION STATEMENT

The mission of the Foyer program is to holistically link vulnerable or disadvantaged young people to housing, education, employment and their communities through living, learning and earning.

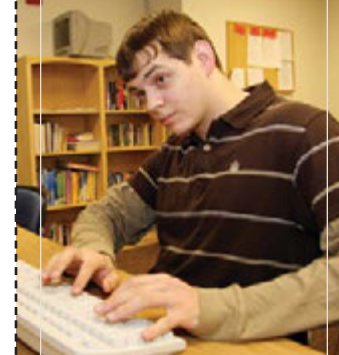
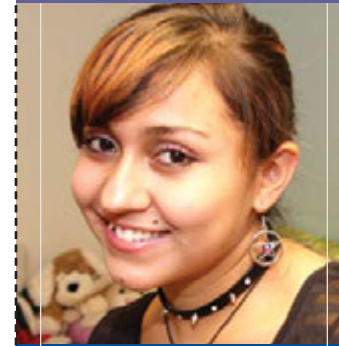


**BOOTH BROWN HOUSE
FOYER PROGRAM**

DOING THE MOST GOODSM



1471 Como Avenue West
Saint Paul, MN 55108
ph 651.251.3502
fx 651.646.1655
thesalarmy.org/foyer



Young adults
seeking self-
sufficiency
often wonder
how to
achieve it.
**Foyer has
their
answer.**



DOING
THE MOST
GOODSM

thesalarmy.org/foyer

BOOTH BROWN HOUSE FOYER

Project Overview

Booth Brown House Foyer provides housing and guidance for young adults ages 16 to 25 who are seeking independent living.



Foyer's on-site support and integrated services help young people make the transition to independence by providing affordable housing, life skills training and links to employment and education.

The Foyer Apartments, located at 1471 Como Avenue West in Saint Paul, contain 35 efficiency rental units. Each tenant rents a single-room apartment with a kitchenette and bath. Rent is month-to-month and equals 30 percent of tenant income.

Tenants and case managers work together to develop and implement living plans that foster independence, self-sufficiency and opportunities for personal growth. The result is young adults who are better prepared for higher levels of independence and less-restrictive housing.

Ten of the Foyer apartments are considered transitional living. The remaining 25 are considered permanent supportive and serve long-term homeless youth.

Target Population

Foyer typically serves youth who are unable to afford housing and have no family support. Examples of Foyer tenants include young adults who:

- Left home for the first time
- Have previously failed independent living
- Come from broken or dysfunctional homes
- Are too old for foster care or a children's shelter
- Lack family or peer support systems
- Are homeless



Supportive Services

Foyer offers tenants a full range of support, which includes services in:

- Social work
- Education
- Employment
- Housing
- Case management
- Healthcare
- Socialization, culture, spiritual growth and recreation
- Legal assistance
- Aftercare
- Independent living classes in housing retention, financial management, maintenance, job searching, cooking, cleaning and other coursework

Eligibility criteria

- Between the ages of 16 and 25
- Able to maintain housing with minimal supervision
- Desire to create healthy support systems for self
- Potential to increase income through employment or public benefits, engage in education or training and/or pursue employment
- 90 days of documented sobriety and a willingness to continue participation in out-patient treatment or support groups
- Willingness to participate in case management and to work toward mutually-established goals
- Minimum income requirements for permanent supportive housing

Persons convicted of a sex offense, arson or extreme violence are disqualified

Persons with serious behavioral problems, antisocial behavior or ongoing/untreated drug abuse are ineligible



DOING THE MOST GOOD™